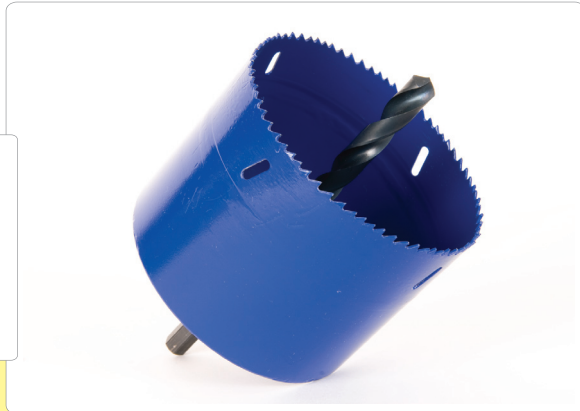


PROsaw™

Quick PROgrommet™ installation



Specifically designed for simple installation of the new Vinidex PROgrommet™ range of stormwater service connections.

A quick and easy system to install 100mm and 150mm connections to StormPRO® stormwater pipe up to 900mm nominal diameter.

- Save time and money
- No more cutting in junctions
- Connects PVC smooth wall pipe to StormPRO®
- Watertight seal
- No mortar or sealant required

PROgrommet™ Range

StormPRO® Nominal Diameter	Service Connection Diameter	
	100mm	150mm
225mm	30185	30188
300mm		
375mm	30186	30177
450mm		
525mm		30178
600mm		
750mm		
900mm		

Service Connection Diameter	
100mm	150mm
30231	30232

PROsaw™ Range



USER INSTRUCTIONS

1. Mark desired centre point for hole on StormPRO® Pipe
2. Hole centre **MUST** be in the centre of pipe profile valley
3. Attach PROsaw™ to **LOW SPEED HIGH TORQUE** drill
Safety Glasses must be worn for all drilling operations
4. Present PROsaw™ to marked centre point and complete drilling pilot hole
5. Select low speed for trepanning operation. For 127mm PROsaw™ select 200 RPM, for 184mm PROsaw™ select 135 RPM
6. Grip drill with two hands with one hand on screw-in handle attachment
7. As PROsaw™ approaches profile pipe ensure saw is square with pipe profile and cutting commences evenly on both sides
8. Complete trepanning operation and remove centre slug from PROsaw™
9. Deburr hole to remove plastic swarf
10. Insert PROgrommet™ ensuring locating wings fit into StormPRO® Pipe profile