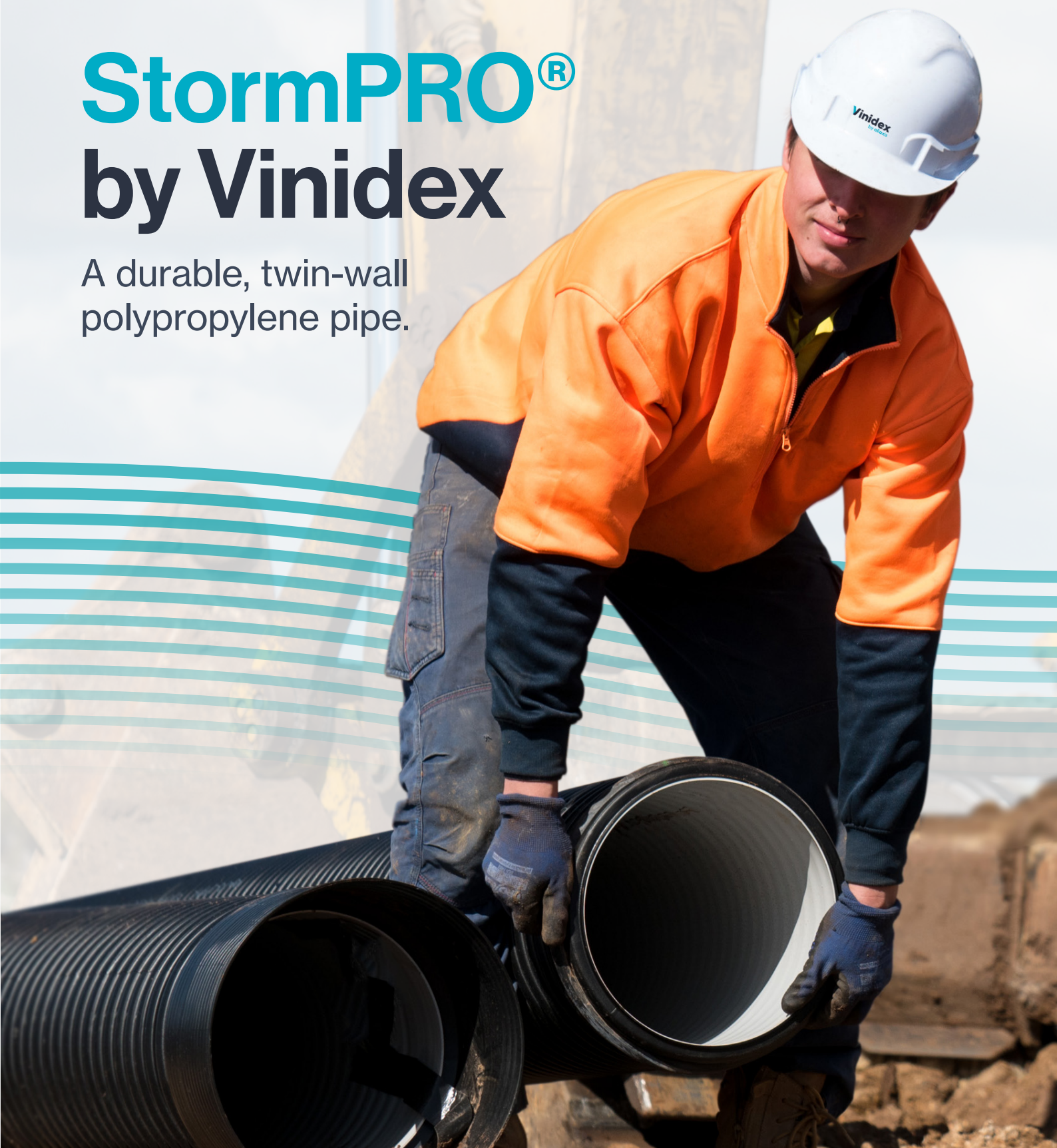


StormPRO® by Vinidex

A durable, twin-wall
polypropylene pipe.



Introducing StormPRO® by Vinidex

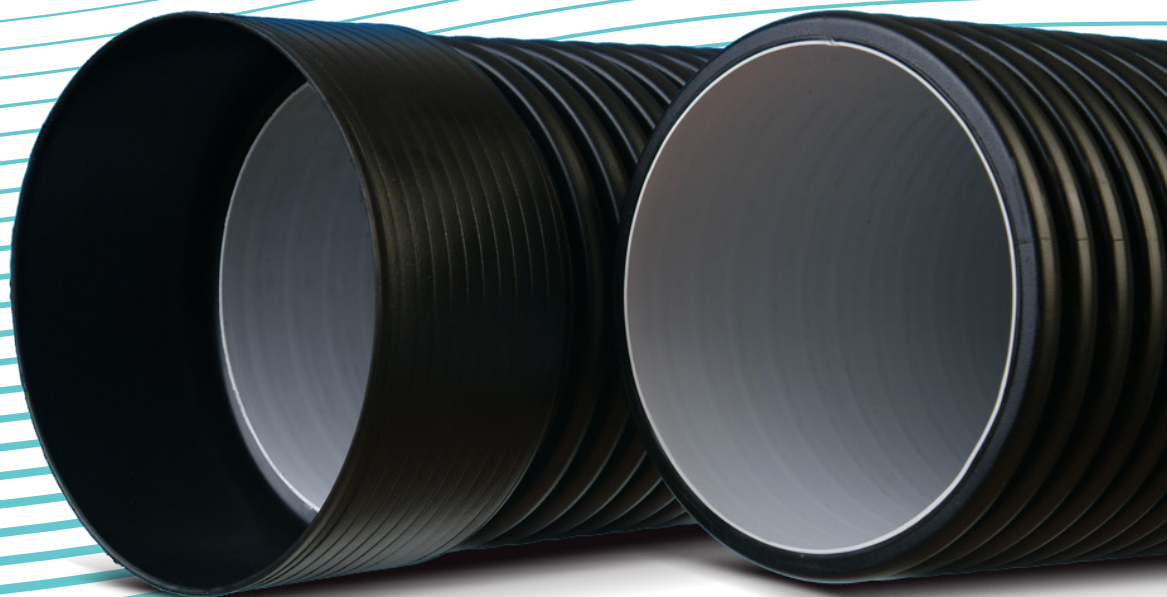
As leaders in manufacturing and advanced pipeline systems, we're constantly innovating our products to improve performance and meet the needs of our customers.

StormPRO is a durable twin-wall corrugated polypropylene pipe for non-pressure stormwater and drainage applications. Used in projects across Australia, StormPRO's structural integrity and wide range of sizes makes it the proven performer for your next project.

The material benefits of twin-wall polypropylene pipes include its high strength and high flexural modulus, making it the optimum material for flexible non-pressure drainage pipe systems. Polypropylene is also highly resistant to the range of chemicals and organic solvents that may be present in the soil or effluent.

StormPRO by Vinidex has been the durable twin-wall polypropylene pipe of choice for specifiers and installers since 2007. Its flexibility and performance capabilities make it a versatile solution for your project needs.

StormPRO by Vinidex is made right here in Australia and designed for all Australian conditions.



Key features and benefits of StormPRO Polypropylene Pipes



Approved by authorities

StormPRO has been approved for use by several road and rail authorities nationally, making it the trusted name in underground stormwater pipe solutions.



Durable & lasting

StormPRO has a 100-year design life and is recyclable at the end of life, making it a sustainable solution that stands the test of time.



Used on a wide array of projects

StormPRO has a proven track record — having been used by Vinidex customers on numerous projects. To discover some of the projects delivered with StormPRO talk to our specification team.



Flexible

When StormPRO pipes are subjected to load, the pipe will initially deflect and take advantage of the lateral pressure provided by the surrounding soil. After initial settlement, there is no further increase in pipe deflection.



Uncompromising performance

StormPRO is made to stringent Australian Standards (AS/NZS 5065) and has excellent hydraulic performance.



Australian made

StormPRO is locally made for all Australian conditions.



Safe and easy to handle

StormPRO is lighter than concrete pipe, easy to handle, and produces no silica dust when cut.



Wide size range available

StormPRO comes in a wide variety of sizes, making it as versatile as it is effective. Choose from 225mm to 900mm diameter pipes in lengths of 3 or 6 metres.



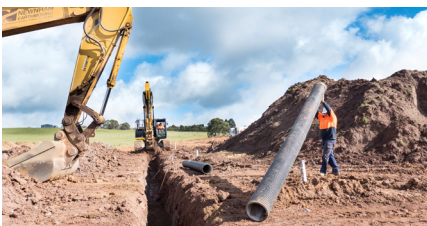
Sustainable practices

All StormPRO production waste is reused in its manufacturing process, ensuring no waste goes into landfill.



Available directly through Vinidex or local stockist

Construction applications



Land development

Ground drainage, stormwater for sub-divisions and new residential development.



Rail

Stormwater run-off.



Plumbing

Commercial and domestic.



Roads

Infrastructure, stormwater, asset renewal.



Mining

Stormwater and aggressive ground.



Rural

Culverts and land drainage.

Twin wall Polypropylene Pipes Compared to Concrete

More versatile

Vinidex StormPRO pipes offer greater versatility compared to concrete pipes. When conditions are suitable, Vinidex SN8 pipes can replace various classes of concrete pipes, simplifying the need for multiple pipe classes on site.

Lightweight for fast installation

StormPRO has been proven when used for rail, road and land development installations to be quicker to install per metre than traditional materials due to its light weight and longer lengths. This is achieved by StormPRO's 6m lengths and having an average 18% the weight of concrete pipe.¹

Project Savings

Independent assessment of the installation cost for StormPRO concluded that if installed as per the Australian standard in the same conditions, StormPRO will have an average cost benefit of 31% to the overall project comparatively to Reinforced Concrete Pipe.²

¹ Calculated RCP Class 2 weights against similar ID pipes for StormPRO and averaged over the StormPRO range DN300 to DN900.

² Costs are based on an independent assessment of the installation requirements for DN300, DN450 and DN600 StormPRO SN8 and Class 2 RCP.

Crack Resistant

Due to the polypropylene material properties of StormPRO pipes, and its ability to adapt to soil movement, cracking does not occur. Under the similar conditions, where soil movement occurs, concrete pipes could potentially show signs of cracking.

Smooth and efficient water flow

StormPRO pipes have a smoother internal surface increasing the efficiency of water flow & hydraulic performance by 27%, therefore a reduced pipe diameter may be achievable for StormPRO, resulting in additional project cost savings.

RCP results in 27% more head loss than StormPRO in this example.	Flow Rate	Roughness Coefficient (k,mm)	Head Loss
DN300 SN8 StormPRO	100L/s	0.015	0.48m/100m
DN300 Class 2 RCP	100L/s	0.15	0.61m/100m



Case study

Narre Warren Cranbourne Road Upgrade

The Narre Warren Cranbourne Road Upgrade was a significant 2.5km infrastructure project that expanded a single-lane carriageway into a double/triple-lane carriageway. Vinidex, in collaboration with McConnell Dowell, played a crucial role in delivering the upgraded stormwater drainage infrastructure essential for the project's success.

StormPRO was chosen over traditional concrete because of its ease of use, fast installation, and cost-effectiveness. The pipes' design enabled the project team to install the drainage system more efficiently, reducing labour time and costs.

Senior Supervisor from McConnell Dowell remarked, "We haven't had to make any modifications, saving us a lot of time and money down the track."

Project Manager, MRVP Amir Dianati, "Stormwater drainage infrastructure we build under the road is critical. So we want to make sure we are getting the right product. StormPRO we have used as a stormwater drainage pipe versus reinforced concrete pipe and the reason we've chosen it is because it's a lot easier to use."

The project was delivered on time while meeting all Australian Standards and Victorian Roads Supplementary Standards. The use of StormPRO not only supported the project's sustainability targets but also ensured a robust and efficient stormwater drainage system, contributing to the overall success of the Narre Warren Cranbourne Road Upgrade.

StormPRO Specification Guide

StormPRO Twin-wall PP pipe specification 6m

StormPRO Dimensional data and specs										Lubrication per joint			
SKU	Pipe Dia. (mm)	Pipe OD (mm)	Pipe ID (mm)	Socket OD (mm)	Socket ID (mm)	Socket depth (mm)	Pipe length (m)	Effective length (m)	Weight / Length (kg)	Diameter	Approx. Joints/ 500ml	Approx. Joints/ 1kg	Approx. ml/ Joint
29456	225	259	226	268	262.5	117	6.14	5.99	18.9	225	13	26	38
29458	300	343	300	354	347.2	158	6.12	5.94	31.2	300	9	19	56
29460	375	428	374	443	432.8	166	6.12	5.93	48	375	8	15	63
29471	450	514	448	530	519.7	195	6.17	5.95	72.1	450	6	12	83
29473	525	600	523	620	606.5	245	6.15	5.89	93.5	525	5	10	100
29475	600	682	596	703	689.3	282	6.15	5.85	120.5	600	4	8	125
29419	700	835	731	830	811	208	6.15	5.92	187.5	750	3	6	167
29418	900	999	873	988	967	207	6.15	5.91	256.7	900	2	5	250

StormPRO Twin-wall PP pipe specification 3m

StormPRO Dimensional data and specs										Lubrication per joint			
SKU	Pipe Dia. (mm)	Pipe OD (mm)	Pipe ID (mm)	Socket OD (mm)	Socket ID (mm)	Socket depth (mm)	Pipe length (m)	Effective length (m)	Weight / Length (kg)	Diameter	Approx. Joints/ 500ml	Approx. Joints/ 1kg	Approx. ml/ Joint
29456	225	259	226	268	262.5	117	3.05	2.92	10	225	13	26	38
29458	300	343	300	354	347.2	158	3.04	2.87	15.5	300	9	19	56
29460	375	428	374	443	432.8	166	3.04	2.86	24	375	8	15	63
29471	450	514	448	530	519.7	195	3.06	2.86	36.9	450	6	12	83
29473	525	600	523	620	606.5	245	3.05	2.8	46.2	525	5	10	100
29475	600	682	596	703	689.3	282	3.05	2.76	59.7	600	4	8	125
29419	700	835	731	830	811	208	3.04	2.82	92.8	750	3	6	167
29418	900	999	873	988	967	207	3.03	2.81	135.7	900	2	5	250

Leading the way, from the ground up.

For over six decades, we've been leading the way — setting the industry benchmark for pipeline systems and solutions. Our legacy spans across building, infrastructure, and agriculture sectors. We make life flow with groundbreaking, high-quality products, connecting everything from water, gas and energy throughout Australia.

Today, we maintain our commitment to innovative solutions that meet our customers' needs and exceed their expectations. Core to our approach are smarter solutions that are more sustainable throughout the manufacturing process and over their lifetime. Globally backed by Aliaxis, and a wide-reaching national footprint, our team of passionate technical experts support our customers throughout their projects — working to deliver solutions for today and the future.

Vinidex. We make life flow.

Limitation of Liability

This product catalogue has been compiled by Vinidex Pty Limited ("the Company") to promote better understanding of the technical aspects of the Company's products to assist users in obtaining from them the best possible performance. The product catalogue is supplied subject to acknowledgement of the following conditions:

1 The product catalogue is protected by copyright and may not be copied or reproduced in any form or by any means in whole or in part without prior consent in writing by the Company. 2 Product specifications, usage data and advisory information may change from time to time with advances in research and field experience. The Company reserves the right to make such changes at any time without further notice. 3 Correct usage of the Company's products involves engineering judgements, which can not be properly made without full knowledge of all the conditions pertaining to each specific installation. The Company expressly disclaims all and any liability to any person whether supplied with this publication or not in respect of anything and all of the consequences of anything done or omitted to be done by any such person in reliance whether whole or part of the contents of this publication. 4 No offer to trade, nor any conditions of trading, are expressed or implied by the issue of content of this product catalogue. Nothing herein shall override the Company's Condition of Sale, which may be obtained from the Registered Office or any Sales Office of the Company. 5 This product catalogue is and shall remain the property of the Company, and shall be surrendered on demand to the Company. 6 Information supplied in this product catalogue does not override a job specification, where such conflict arises; consult the authority supervising the job. © Copyright Vinidex Pty Limited.

Vinidex Pty Limited
ABN 42 000 664 942

HEAD OFFICE
Level 4, 26 College Street
Darlinghurst NSW 2010
PO Box 747, Darlinghurst, NSW, 1300

Customer Service
Phone: 13 11 69
Fax: 13 24 43
Email: sales@vinidex.com.au
Web: www.vinidex.com.au



**SCAN TO
FIND OUT
MORE**