

# AquaDUC Tee

Modular Flanged Tee off-take  
for polyethylene pipe DN125 and DN180

AquaDUC Tee's are a clamped, flanged off-take that is specially designed to provide a quick and easy method of adding branches to PE pressure water mains. Made from Ductile Iron, the two halves are fitted around the PE pipe and connected together with 6 stainless steel bolts.

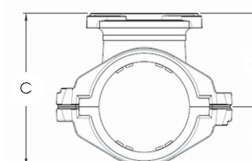
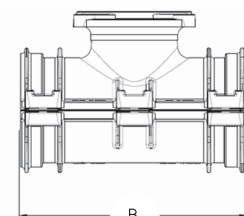
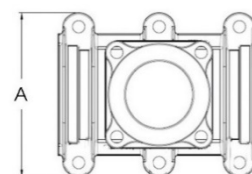


## PART OF THE AQUADUC MODULAR FAMILY

- Special designed circumferential seal
- Approved for use with drinking water
- Horizontal or vertical mounting
- Quick and easy installation
- Either dry or live tapped.

## APPROVALS AND TYPE TESTS

- WaterMark
- StandardsMark
- AS/NZS 4029:2008
  - Clause 4.4.2 Liquid infiltration test
  - Clause 4.4.4 Hydrostatic pressure test
  - Clause 4.4.5 Resistance to pressure with bending moment applied
  - Clause 4.4.6.2 Resistance to rotational sliding
  - Clause 4.4.6.3 Resistance to axial sliding



ITEM	MATERIAL	STANDARDS
Body	Ductile Iron	Grade 400-12
Seals	Nitrile Rubber	AS1646, AS/NZS4020
Clamp Bolt	Stainless Steel	Grade 316 (A4)
Coating	Fusion Bonded Epoxy	AS/NZS4158:2003

VINIDEX CODE	MODEL	PIPE DN	OFFTAKE DN	PN	A	B	C	D	E	CLAMP BOLT SIZE	APPROX WEIGHT KG
80685	125 x 80	125	80	PN16	245	300	212	130	82	M16	12
80686	125 x 100	125	100	PN16	245	300	212	130	82	M16	12
80687	180 x 80	180	80	PN16	304	300	265	155	110	M16	16.5
80689	180 x 150	180	150	PN16	304	300	293	183	110	M16	20

\*Dimensions in mm

# AquaDUC Repair Collar

Modular flanged repair collar  
for polyethylene pipe DN125 and DN180

AquaDUC Repair Collars are a clamped collar that is specially designed to provide a quick and easy method of repairing PE pressure water mains. Made from Ductile Iron, the two halves are fitted around the PE pipe and connected together with 6 stainless steel bolts.

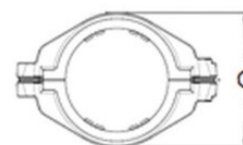
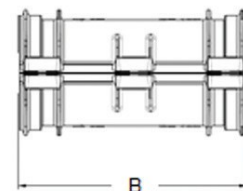
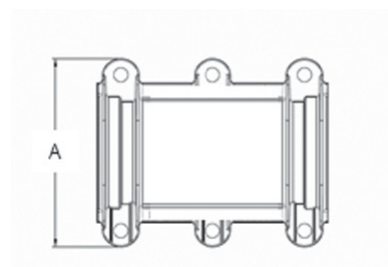


## PART OF THE AQUADUC MODULAR FAMILY

- Special designed circumferential seal
- Approved for use with drinking water
- Horizontal or vertical mounting
- Quick and easy installation
- Applied dry or live.

## APPROVALS AND TYPE TESTS

- WaterMark
- StandardsMark
- AS/NZS 4029:2008
  - Clause 4.4.2 Liquid infiltration test
  - Clause 4.4.4 Hydrostatic pressure test
  - Clause 4.4.5 Resistance to pressure with bending moment applied
  - Clause 4.4.6.2 Resistance to rotational sliding
  - Clause 4.4.6.3 Resistance to axial sliding



ITEM	MATERIAL	STANDARDS
Body	Ductile Iron	Grade 400-12
Seals	Nitrile Rubber	AS1646, AS/NZS4020
Clamp Bolt	Stainless Steel	Grade 316 (A4)
Coating	Fusion Bonded Epoxy	AS/NZS4158:2003

VINIDEX CODE	MODEL	PIPE DN	PN	A	B	C	CLAMP BOLT SIZE	APPROX WEIGHT KG
80683	PE125	125	PN16	245	300	164	M16	9
80684	PE180	180	PN16	304	300	260	M16	14.5

\*Dimensions in mm

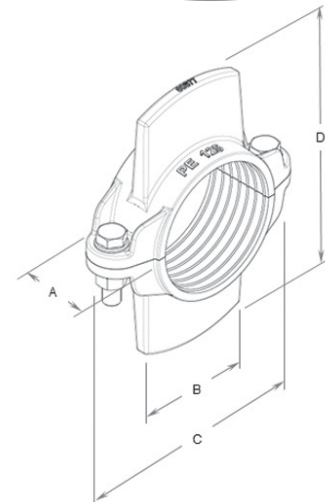
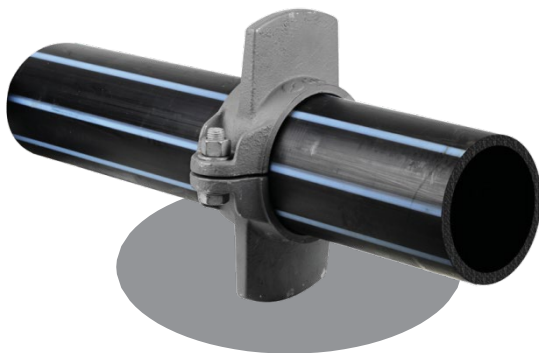
## AquaDUC Puddle

Clamped restraining flange for polyethylene pipe DN125, DN180, DN280

AquaDUC Puddle's are clamped flanges that have been specially designed to provide a quick and easy method of anchoring PE pressure pipe to a thrust block. The fitting consists of two halves that are bolted to the pipe.

### PART OF THE AQUADUC MODULAR FAMILY

- Part of the AquaDUC range of fittings
- Rapid mechanical installation
- Corrosion protected
- Applied dry or live.



VINIDEX CODE	PIPE DN	MATERIAL	A	B	C	D	CLAMP BOLT SIZE	APPROX WEIGHT KG
80677	125	Ductile Iron	70	112	229	266	M16	5.5
80678	180	Ductile Iron	70	133	295	322	M16	6.5
80679	280	Ductile Iron	100	185	354	420	M16	14