



**akatherm HDPE**  
Soil & Waste System

**Aim higher**



## FACT

### Trend towards prefabrication

In most countries the labour costs are becoming an increasing part of the total installed cost of a project. To keep these costs at a minimum all major builders are steering towards prefabrication and modular design.



## FACT

### Evermore durable

Total cost of ownership is the name of the game. When translating this to installed systems, it means durable and quality materials that are proven to be low maintenance, now and in the future.



## FACT

### Complex modular designs

While building plans can take several years to develop because of large and complex designs, the building itself takes up less and less time. This requires modular design and smart use of materials on site.

# Driven by durability

Modern building designs present evermore extreme challenges. Today, whether a consultant or installer, you need soil & waste solutions capable of responding to the commercial challenges faced by your clients' and end users' businesses. The drive for more:

## Durability

Akatherm HDPE soil & waste systems are made from polyethylene, a durable material with a very long lifetime.

## Low cost of ownership

Easy prefabrication and installation with secure joints all work together to keep the total cost of ownership at a minimum.

## Security and flexibility

Akatherm HDPE soil & waste systems can be poured into concrete, embedded in the ground or hung from the ceiling and still sustain and perform.



These particular challenges can only be overcome by a specialist drainage solution. Akatherm helps you meet these demands with confidence.

Akatherm offers more than just a soil & waste system. Like every specialist drainage solution from Akatherm, it comes with a comprehensive level of support.

All our systems are backed by dedicated software, full training and unique products, plus the service standards you would expect from high performance drainage experts and the worldwide backing of the Aliaxis group.



## Decisive advantages of Akatherm HDPE

High Density Polyethylene is an exceptionally flexible and tough material, highly resistant to mechanical stress and impact even at low temperatures.

Akatherm HDPE has a complete product range consisting of pipes and fittings from 40 mm to 315 mm. It includes a wide range of branches, bends, traps, sanitary and connection fittings.

HDPE is a light weight system with simple and secure jointing techniques like electrofusion. It is a fully closed system with homogenous joints. Cost saving prefabrication is possible even in large sizes.



# Be smarter

Akatherm HDPE has a high temperature and chemical resistance which makes it ideal for drainage in residential housing, commercial kitchens and laundries. It is flexible and tough for installation underground and embedded in concrete. Its closed system is perfect for trade waste applications like industrial and laboratory fluids where system integrity and secure homogenous connections are critical.



**Chemical resistant**



**Elastic**



**Hot water resistant**



**Impact-resistant and tough**

## Quality and certification

Akatherm HDPE is developed and manufactured within an ISO 9001 Quality Assurance system and complies with the EN 1519 and other relevant international standards as well as meeting numerous national approved quality and safety standards.



Australia



ISO 9001  
Quality  
management system



ISO 14001  
Environmental  
management system



Austria



Belgium



Denmark



France



Germany



Sweden



Switzerland



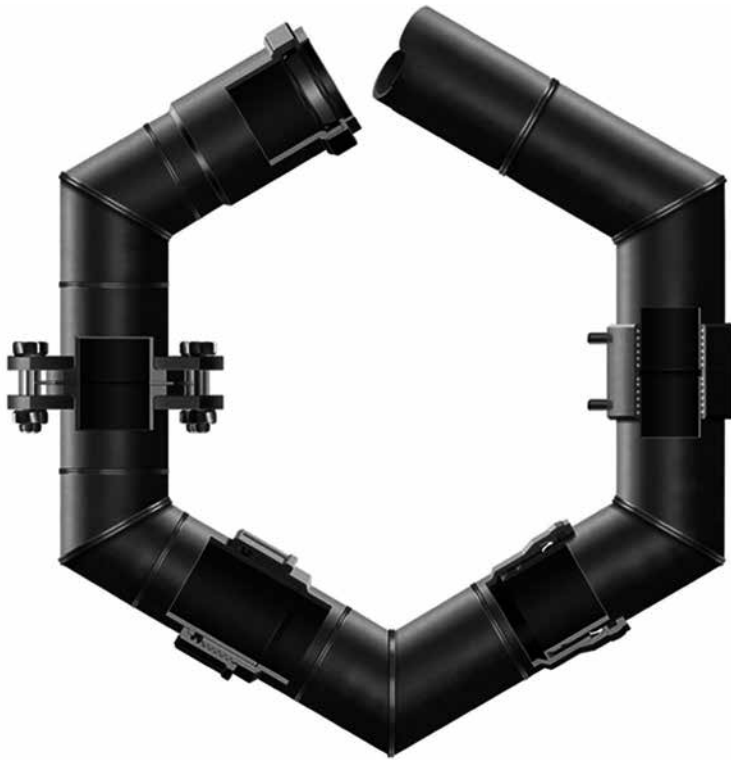
The Netherlands



United Kingdom

## Jointing technology

Akatherm HDPE offers a choice of welded and mechanical jointing techniques. Welded joints provide a homogenous joint ideal for ceiling voids, vertical stacks and underground pipework. Mechanical joints offer adjustability, flexibility and the option to demount.



### Mechanical joints

- Plug-in joint
- Snap joint
- Screw-thread joint
- Flanged joint
- Contraction sleeve
- Sleeve coupling
- Metal coupling
- Rubber collar joint

### Welded joints

- Butt-weld joint
- Electrofusion joint

**Suited for efficient joints and prefabrication**

Butt-welding homogeneously joints HDPE pipes and fittings into prefabricated sections without using additional connection fittings.



**Suited for on-site joints in tight areas**

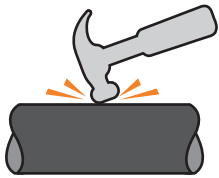


Electrofusion is a rapid and simple way of permanently jointing individual pipes and fittings or prefabricated pipe sections in tight places.

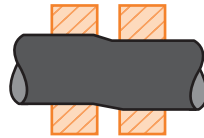
# Think it. Build it.

## Simple, secure & fast

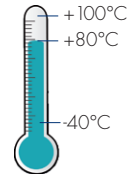
### + Material advantages



Impact-resistant and tough:  
Unbreakable at temperatures  
above 5°C



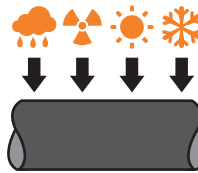
Elastic and flexible:  
Adjusts to local ground movement  
for underground use



Thermal resistant:  
Applications possible between  
-40°C and 80°C. Up to 100°C for  
short periods of time.



Chemical resistant:  
Suitable for transport of polluted  
waste water

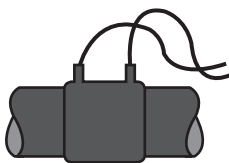


UV & weather resistant:  
Unrestricted outside use through  
carbon black additives



Wear resistant:  
Lower cost due to long lifetime

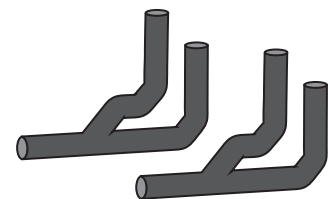
### + System advantages



Welded system:  
Simple and secure installation  
using butt-welding and electrofusion



Homogeneous welded joints:  
Pull tight and leak proof for a  
completely closed system



Prefabrication:  
Fast and cost-saving installation  
of repetitive systems



Light in weight:  
Cost saving in transport and  
handling



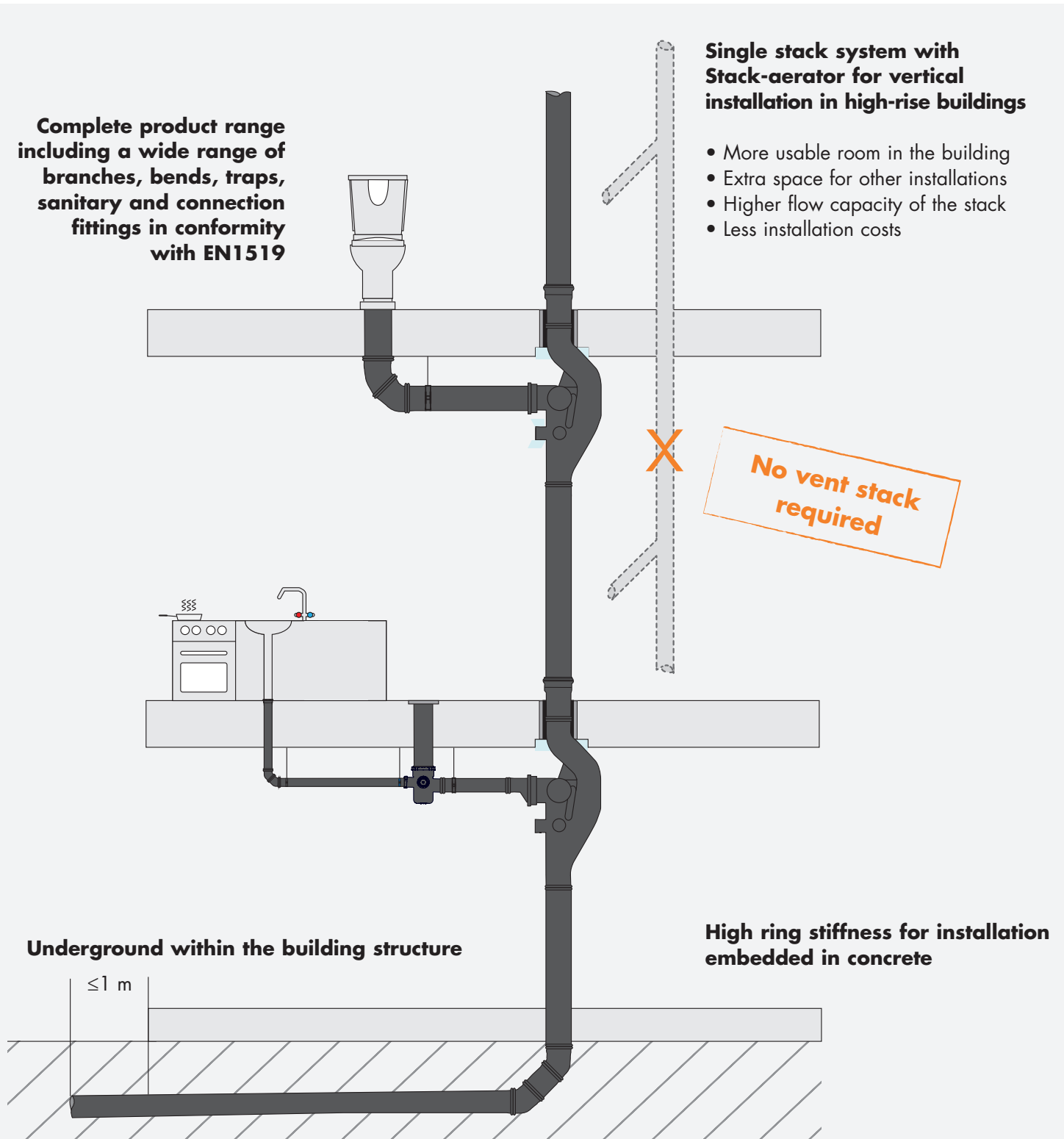
Low heat conductivity:  
No condensation insulation required  
during short periods of cooling



Non-toxic:  
100% recyclable and environ-  
mental friendly

# Aim higher

Because skyscrapers are designed evermore extreme, a single stack soil & waste system offers you the possibility to aim higher. End users gain more useable space inside the building because the vent pipe is obsolete. Architects can create extreme building shapes and go 'sky high' because the unique aspects offer several flexible connection possibilities. Material and installation costs are reduced through low weight, the vent pipe being obsolete and prefabricated pipe segments.



## Pipes

### Pipe tempered



VINIDEX CODE	PRODUCT NO.	SIZE
<b>SDR 26</b>		
53805	100500	50mm/5m
53806	105600	56mm/5m
53807	100600	63mm/5m
53808	100700	75mm/5m
53809	100900	90mm/5m
53810	101100	110mm/5m
53811	101200	125mm/5m
53812	101600	160mm/5m
<b>SDR 33</b>		
53813	102000	200mm/5m
53814	102500	250mm/5m
53815	103100	315mm/5m
<b>SDR 26</b>		
53817	102010	200mm/5m
53818	102510	250mm/5m
53819	103110	315mm/5m

## Fittings

### Reducer eccentric



VINIDEX CODE	PRODUCT NO.	SIZE
53405	165605	56/50mm
53381	160605	63/50mm
53382	160656	63/56mm
53383	160705	75/50mm
53385	160756	75/56mm
53384	160706	75/63mm
53387	160905	90/50mm
53390	160956	90/56mm
53388	160906	90/63mm
53389	160907	90/75mm
53392	161105	110/50mm
53396	161156	110/56mm
53393	161106	110/63mm
53394	161107	110/75mm
53395	161109	110/90mm
53397	161205	125/50mm
53399	161207	125/75mm
53400	161209	125/90mm
53401	161211	125/110mm
53402	161611	160/110mm
53403	161612	160/125mm

### Reducer eccentric long



VINIDEX CODE	PRODUCT NO.	SIZE
53342	142011	200/110mm
53343	142012	200/125mm
53344	142016	200/160mm
53345	142520	250/200mm
53346*	143120	315/200mm
53347	143125	315/250mm

\*Fabricated

### Reducer concentric



VINIDEX CODE	PRODUCT NO.	SIZE
53349	150504	50/40mm
53378	155604	56/40mm
53379	155605	56/50mm
53351	150605	63/50mm
53352	150656	63/56mm
53353	150705	75/50mm
53355	150756	75/56mm
53354	150706	75/63mm
53357	150905	90/50mm
53360	150956	90/56mm
53358	150906	90/63mm
53359	150907	90/75mm
53361	151105	110/50mm
53365	151156	110/56mm
53362	151106	110/63mm
53363	151107	110/75mm
53364	151109	110/90mm
53366	151205	125/50mm
53370	151256	125/56mm
53367	151207	125/75mm
53368	151209	125/90mm
53371	151611	160/110mm
53372	151612	160/125mm
53373	152016*	200/160mm
53374	152516	250/160mm
53375	152520*	250/200mm
53376	153120	315/200mm
53377	153125*	315/250mm

\* Buttweid Only

### Bend 90° with long side



VINIDEX CODE	PRODUCT NO.	SIZE
53301	110592	50mm
53314	115692	56mm
53303	110692	63mm
53305	110792	75mm
53306	110992	90mm
53307	111196	110mm
53309	111292	125mm

### Bend 15°



VINIDEX CODE	PRODUCT NO.	SIZE
53406*	181115	15°/110mm
53408	181615	15°/160mm
53410	182515	15°/250mm
53411	183115	15°/315mm

\*Fabricated

### Bend 30°



VINIDEX CODE	PRODUCT NO.	SIZE
53407*	181130	30°/110mm
53409	181630	30°/160mm

\*Fabricated

### Bend 180°



VINIDEX CODE	PRODUCT NO.	SIZE
53302	110599	50mm
53315	115699	56mm
53304	110699	63mm

### Bend 88.5° electrofusable



VINIDEX CODE	PRODUCT NO.	SIZE
53308	111198	88.5°/110mm

### Bend 90° for buttweid only



VINIDEX CODE	PRODUCT NO.	SIZE
53310	111691	160mm
53311	112091	200mm
53312	112591	250mm
53313	113191	315mm



## Elbow 88.5°



VINIDEX CODE	PRODUCT NO.	SIZE
53318	120588	50mm
53341	125688	56mm
53320	120688	63mm
53323	120788	75mm
53326	120988	90mm
53329	121188	110mm
53331	121288	125mm
53333	121688	160mm
53335*	122088	200mm
53337*	122588	250mm
53339*	123188	315mm

\*Fabricated

## Elbow 45°



VINIDEX CODE	PRODUCT NO.	SIZE
53317	120545	50mm
53340	125645	56mm
53319	120645	63mm
53321	120745	75mm
53324	120945	90mm
53327	121145	110mm
53330	121245	125mm
53332	121645	160mm
53334	122045	200mm
53336	122545	250mm
53338	123145	315mm

## Elbow 45° with long side



VINIDEX CODE	PRODUCT NO.	SIZE
53322	120746*	75mm
53325	120946*	90mm
53328	121146*	110mm

## Double Branch 45°



VINIDEX CODE	PRODUCT NO.	SIZE
53544	361105	Branch 45° 110/50mm x2
53545	361111	Double Branch 45°110mm

## Y-branch 45°



VINIDEX CODE	PRODUCT NO.	SIZE
53482	300505	50/50mm
53536	305605	56/50mm
53537	305656	56/56mm
53483	300605	63/50mm
53485	300656	63/56mm
53484	300606	63/63mm
53487	300705	75/50mm
53490	300756	75/56mm
53488	300706	75/63mm
53489	300707	75/75mm
53491	300905	90/50mm
53495	300956	90/56mm
53492	300906	90/63mm
53493	300907	90/75mm
53494	300909	90/90mm
53497	301105	110/50mm
53502	301156	110/56mm
53498	301106	110/63mm
53499	301107	110/75mm
53500	301109	110/90mm
53501	301111	110/110mm
53503	301205	125/50mm
53509	301256	125/56mm
53504	301206	125/63mm
53505	301207	125/75mm
53506	301209	125/90mm
53507	301211	125/110mm
53508	301212	125/125mm
53512	301607	160/75mm
53513	301609	160/90mm
53514	301611	160/110mm
53515	301612	160/125mm
53516	301616	160/160mm
53517	302007	200/75mm
53518	302009	200/90mm
53519	302011	200/110mm
53520	302012	200/125mm
53521	302016	200/160mm
53522	302020	200/200mm
53524*	302511	250/110mm
53525	302512	250/125mm
53526	302516	250/160mm
53527*	302520	250/200mm
53528*	302525	250/250mm
53529*	303111	315/110mm
53530	303112	315/125mm
53531*	303116	315/160mm
53532*	303120	315/200mm
53533*	303125	315/250mm
53534*	303131	315/315mm

\*Fabricated

## Branch 88.5°



VINIDEX CODE	PRODUCT NO.	SIZE
53412	200505	50/50mm
53462	205605	56/50mm
53463	205656	56/56mm
53414	200605	63/50mm
53416	200656	63/56mm
53415	200606	63/63mm
53418	200705	75/50mm
53421	200756	75/56mm
53419	200706	75/63mm
53420	200707	75/75mm
53423	200905	90/50mm
53424	200906	90/63mm
53425	200907	90/75mm
53426	200909	90/90mm
53428	201105	110/50mm
53433	201156	110/56mm
53429	201106	110/63mm
53430	201107	110/75mm
53431	201109	110/90mm
53432	201111	110/110mm
53437	201212	125/125mm
53439	201605	160/50mm
53440	201606	160/63mm
53441	201607	160/75mm
53442	201609	160/90mm
53443	201611	160/110mm
53444	201616	160/160mm
53449	202016	200/160mm
53450*	202020	200/200mm
53451*	202511	250/110mm
53452	202512	250/125mm
53453	202516	250/160mm
53455*	202525	250/250mm
53456	203111	315/110mm
53458	203116	315/160mm
53460	203125	315/250mm
53461	203131	315/315mm

\*Fabricated

## Clean out branch 45°



VINIDEX CODE	PRODUCT NO.	SIZE
53538	331100	110/110mm

## Clean out branch 90°



VINIDEX CODE	PRODUCT NO.	SIZE
53464	230500	50mm
53473	235600	56mm
53465	230600	63mm
53466	230700	75mm
53467	230900	90mm
53468	231120	110mm
53469*	231600	160/110mm
53470	232000	200/110mm
53471	232500	250/110mm
53472	233100	315/110mm

\*Fabricated

## Branch 88.5° swept entry



VINIDEX CODE	PRODUCT NO.	SIZE
53480	251111	110mm

## Double ball branch 88.5° - 90°



VINIDEX CODE	PRODUCT NO.	SIZE
53474	241101	110/110x90°
53477	241201	125/110x90°

## Double ball branch 88.5° - 135°



VINIDEX CODE	PRODUCT NO.	SIZE
53475	241102	110/110x135°
53478	241202	125/110x135°

## Double ball branch 88.5° - 180°



VINIDEX CODE	PRODUCT NO.	SIZE
53476	241103	110/110x180°
53479	241203	125/110x180°

## Triple ball branch 88.5° - 90°



VINIDEX CODE	PRODUCT NO.	SIZE
53539	341101	110/110x90°
53541	341201	125/110x90°

## Triple ball branch 88.5° - 135°



VINIDEX CODE	PRODUCT NO.	SIZE
53540	341102	110/110x135°
53542	341202	125/110x135°

## Fourfold ball branch 88.5° - 90°



VINIDEX CODE	PRODUCT NO.	SIZE
53604	441101	110/110x90°

## Stack-aerator - Akavent



VINIDEX CODE	PRODUCT NO.	SIZE
53653	601117	110mm
53654	601617	160mm

## End cap



VINIDEX CODE	PRODUCT NO.	SIZE
53663	670507	50mm
53673	675607	56mm
53664	670607	63mm
53666	670707	75mm
53667	670907	90mm
53668	671107	110mm
53669	671609	160mm
53670	672009	200mm
53671	672509	250mm
53672	673109	315mm

## Connection fittings

### Electrofusion coupler



VINIDEX CODE	PRODUCT NO.	SIZE
53561	410495	40mm
53562	410595	50mm
53572	415695	56mm
53563	410695	63mm
53564	410795	75mm
53565	410995	90mm
53566	411195	110mm
53567	411295	125mm
53568	411695	160mm
53569	412065	200mm
53570	412565	250mm
53571	413165	315mm

### Snap socket



VINIDEX CODE	PRODUCT NO.	SIZE
53550	400510	50mm
53709	400610	63mm
53553	400710	75mm
53712	400910	90mm
53554	401110	110mm
53556	401610	160mm
53715	402010	200mm

### Expansion socket with anchor point



VINIDEX CODE	PRODUCT NO.	SIZE
53551	400520	50mm
53560	405620	56mm
53710	400620*	63mm
53735	420720	75mm
53762	420920	90mm
53582	421120	110mm
53584	421620	160mm
53557	402020*	200mm
53558	402520*	250mm
53559	403120*	315mm

\* Butt weld only.

### Inspection screw lock long



VINIDEX CODE	PRODUCT NO.	SIZE
53656	660540	50mm
53661	665640	56mm
53657	660640	63mm
53658	660740	75mm
53659	660940	90mm
53660	661140	110mm

### Plug-in socket for butt weld or E/F



VINIDEX CODE	PRODUCT NO.	SIZE
53578	420550	50mm
53585	425650	56mm
53579	420650	63mm
53580	420750	75mm
53581	420950	90mm
53583	421150	110mm

### Screw coupler short



VINIDEX CODE	PRODUCT NO.	SIZE
53588	430530	50mm
53603	435630	56mm
53591	430630	63mm
53593	430730	75mm
53596	430930	90mm
53600	431130	110mm

### Female thread adaptor short



VINIDEX CODE	PRODUCT NO.	SIZE
53676	910580	50 x 1" BSP
53677	910581	50 x 1 1/4" BSP
53678	910582	50 x 1 1/2" BSP
53679	910682	63 x 1 1/2" BSP
53680	910683	63 x 2" BSP

### Flange bushing for screw coupler



VINIDEX CODE	PRODUCT NO.	SIZE
53586	430405	40mm
53587	430505	50mm
53602	435605	56mm
53590	430605	63mm
53592	430705	75mm
53595	430905	90mm
53598	431105	110mm

### Inspection screw lock short



VINIDEX CODE	PRODUCT NO.	SIZE
53665	660700	75mm

### Waste connector



VINIDEX CODE	PRODUCT NO.	SIZE
53706	980482	40 x 1 1/2"
53707	980583	50 x 2"

### Contraction socket



VINIDEX CODE	PRODUCT NO.	SIZE
53638	550503	50/70mm
53639	550504	50/80mm
53652	555601	56/75mm
53640	550601	63/75mm
53641	550603	63/85mm
53642	550701	75/90mm
53643	550702	75/100mm
53644	550902	90/110mm
53645	551102	110/125mm
53646	551103	110/135mm
53647	551104	110/150mm
53648	551602	160/180mm
53549	551604	160/195mm
53650	552001	200/225mm
53651	552501	250/280mm

### Female thread adaptor long



VINIDEX CODE	PRODUCT NO.	SIZE
53684	920580	50mm x 1" BSP
53685	920581	50mm x 1 1/4" BSP
53686	920582	50mm x 1 1/2" BSP
TBA	920583	50mm x 2" BSP
53689	925683	56mm x 2" BSP
53687	920682	63mm x 1 1/2" BSP
53688	920683	63mm x 2" BSP
TBA	920784	75mm x 2 1/2" BSP

### Male thread adaptor short



VINIDEX CODE	PRODUCT NO.	SIZE
53692	960580	50 x 1" BSP
53693	960581	50 x 1 1/4" BSP
53694	960682	63 x 1 1/2" BSP
53695	960683	63 x 2" BSP

### Slab repair coupler



VINIDEX CODE	SIZE
53767	56mm
53768	110mm

### Male thread adaptor long



VINIDEX CODE	PRODUCT NO.	SIZE
53700	970580	50mm x 1" BSP
53701	970581	50mm x 1 1/4" BSP
53702	970582	50mm x 1 1/2" BSP
53705	975683	56mm x 2" BSP
53703	970682	63mm x 1 1/2" BSP
53704	970683	63mm x 2" BSP

## Stub flange



VINIDEX CODE	PRODUCT NO.	SIZE
53605	470402*	40mm
53606	470502*	50mm
53607	470602*	63mm
53608	470702*	75mm
53609	470902	90mm
53610	471102	110mm
53611	471202	125mm
53612	471602	160mm
53613	472002*	200mm
53614	472502*	250mm
53615	473102*	315mm

\* Butt weld only.

## Adaptor for PVC & Copper - use with snap or expansion socket



VINIDEX CODE	PRODUCT NO.	SIZE
- For 50mm DWV PVC - 56 HDPE (use standard snap/expansion socket)		
53736	400821	80mm dwv PVC/copper - 90 HDPE
- For 100mm DWV PVC - 110 HDPE (use standard snap/expansion socket)		
53737	401121	100mm copper - 110 HDPE
- For 150mm DWV PVC - 160 HDPE (use standard snap/expansion socket)		

## Rubber collar for pipe in pipe joints



VINIDEX CODE	PRODUCT NO.	SIZE
53629	513301	50/32mm
53630	513501	50/40mm
53632	513503	56/40mm
53631	513502	63/32mm
53633	513602	63/40mm
63634	513702	63/50mm

## Plugin socket adaptor HDPE-CU



VINIDEX CODE	PRODUCT NO.	SIZE
53757	425651	56x50mm

## Sanitary fittings

### Wall-lavatory bend 90°



VINIDEX CODE	PRODUCT NO.	SIZE
53623	501182	110/110mm

\*NBR O-ring

### Double wall-lavatory bend 90° (vertical)



VINIDEX CODE	PRODUCT NO.	SIZE
53621	501134	110/110mm

\*NBR O-ring

### Double wall-lavatory bend 90° (horizontal)



VINIDEX CODE	PRODUCT NO.	SIZE
53622	501135	110/110mm

\*NBR O-ring

### Protection plug



VINIDEX CODE	PRODUCT NO.	SIZE
53599	431119	110mm

### Floor-lavatory socket



VINIDEX CODE	PRODUCT NO.	SIZE
53618	501101	110mm

### Floor-lavatory bend 90°



VINIDEX CODE	PRODUCT NO.	SIZE
53619	501111	110mm

### Trap connection bend 90°



VINIDEX CODE	PRODUCT NO.	SIZE
53625	510411	40/46mm
53627	510511	50/46mm
53628	510512	50/58mm
53636	515611	56/46mm
53637	515612	56/58mm

### Trap connection socket



VINIDEX CODE	PRODUCT NO.	SIZE
53624	510401	40/46mm
53626	510502	50/58mm
53635	515602	56/58mm

### Rubber seal for floor-lavatory socket/bend



VINIDEX CODE	PRODUCT NO.	SIZE
53620	501113	129mm

## Traps

### Four way riser electrofusable



VINIDEX CODE	PRODUCT NO.	SIZE
53733	185656	110mm x 56mm
53734	189656	90mm x 56mm

### S-trap



VINIDEX CODE	PRODUCT NO.	SIZE
53725	180005	50/40mm
53726	180006	50/50mm
53727	180008	56/50mm

### P-trap



VINIDEX CODE	PRODUCT NO.	SIZE
53728	180001	50/40mm
53729	180002	50/50mm
53730	180004	56/50mm

### Silt/Bucket Trap (S.S. Lid & Bucket)



VINIDEX CODE	PRODUCT NO.	SIZE
53732	183161	160/110mm Outlet
53731	183251	250/110mm Outlet

### Pallazi Trap/Floor Trap (fixed)



VINIDEX CODE	PRODUCT NO.	SIZE
53716	183117	110/75mm
53717	183906	90/63mm
53718	183907	90/75mm
53719	183956	90/56mm

### Disconnecter Trap (adjustable) for E/F



VINIDEX CODE	PRODUCT NO.	SIZE
53720	182909	90mm
53721	182111	110mm

### Disconnecter Trap (fixed) for E/F



VINIDEX CODE	PRODUCT NO.	SIZE
53722	181111	110mm

## Electrofusion units

### Electrofusion Equipment



VINIDEX CODE	PRODUCT NO.	SIZE
53741	HSTS160	40/160mm
53742	HSTS315	40/315mm

## Tools & accessories

### Isopropyl PE cleaner



VINIDEX CODE
99600

### Scraper Spider Kit



VINIDEX CODE	PRODUCT NO.
53759	419865





Vinidex Pty Limited  
ABN 42 000 664 942

HEAD OFFICE  
Level 4, 26 College Street  
Darlinghurst NSW 2010  
PO Box 747, Darlinghurst NSW 1300

CUSTOMER SERVICE  
P 13 11 69 | F 13 24 43  
E [sales@vinidex.com.au](mailto:sales@vinidex.com.au)  
W [www.vinidex.com.au](http://www.vinidex.com.au)

Reception: +61 2 8278 0500



#### Limitation of Liability

This product catalogue has been compiled by Vinidex Pty Limited ("the Company") to promote better understanding of the technical aspects of the Company's products to assist users in obtaining from them the best possible performance.

The product catalogue is supplied subject to acknowledgement of the following conditions:

1 The product catalogue is protected by copyright and may not be copied or reproduced in any form or by any means in whole or in part without prior consent in writing by the Company. 2 Product specifications, usage data and advisory information may change from time to time with advances in research and field experience. The Company reserves the right to make such changes at any time without further notice. 3 Correct usage of the Company's products involves engineering judgements, which can not be properly made without full knowledge of all the conditions pertaining to each specific installation. The Company expressly disclaims all and any liability to any person whether supplied with this publication or not in respect of anything and all of the consequences of anything done or omitted to be done by any such person in reliance whether whole or part of the contents of this publication. 4 No offer to trade, nor any conditions of trading, are expressed or implied by the issue of content of this product catalogue. Nothing herein shall override the Company's Condition of Sale, which may be obtained from the Registered Office or any Sales Office of the Company. 5 This product catalogue is and shall remain the property of the Company, and shall be surrendered on demand to the Company. 6 Information supplied in this product catalogue does not override a job specification, where such conflict arises; consult the authority supervising the job. © Copyright Vinidex Pty Limited.