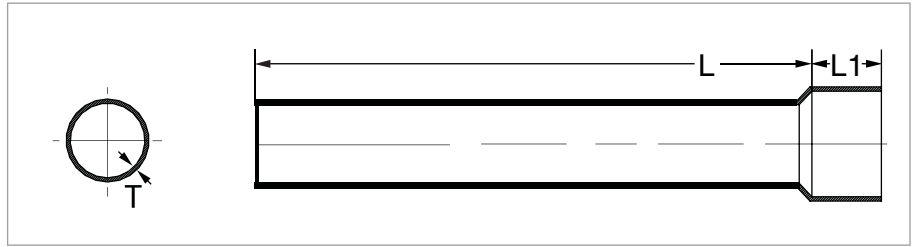
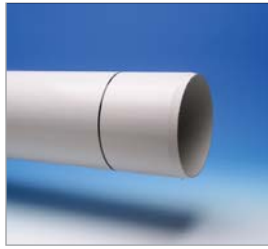


# PVC NON-PRESSURE STORMWATER PIPE & FITTINGS AS/NZS 1254





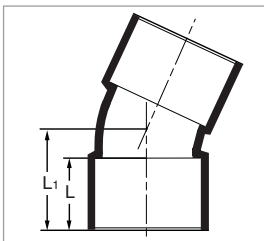
### STORMWATER PIPE - SCJ

VINIDEX CODE	NOMINAL DIAMETER DN (mm)	LENGTH Lo (m)	TYPE	MIN WALL THICKNESS T (mm)	SOCKET DEPTH L' (mm)	CRATE QTY	WEIGHT (kg)
20905	75	3	Round down pipe	1.5	20	120	1.74
20510	90	6	Excluding WA	1.6	36	72	4.70
20501	90	6	WA only	1.32	48	72	3.75
20512	90	6	SEH-NSW & QLD only	2.2	36	72	6.22
20670	90	6	Slotted	1.7	36	72	4.70
20530	150	6		2.9	64	26	14.40
20710	150	6	Slotted	2.9	-	1	14.60
20540	225	6		4.3	100	1	33.74
20550	300	6		5.7	125	1	56.90
20580	375	6		5.7	160	1	86.40



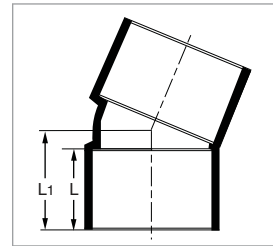
### 15° STORMWATER ELBOWS F & F

VINIDEX CODE	NOMINAL DIAMETER (mm)	L (mm)	L' (mm)	PACK QTY	W (kg)
60450	90	28	41.7	20	0.07



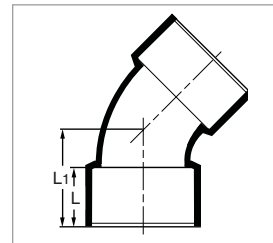
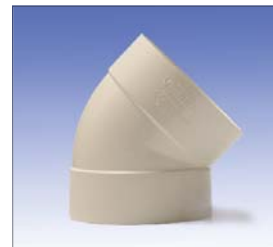
### 22.5° STORMWATER ELBOWS F & F

VINIDEX CODE	NOMINAL SIZE (mm)	L (mm)	L' (mm)	PACK QTY	W (kg)
60480	90	28	42.6	20	0.08



### 45° STORMWATER ELBOWS F & F

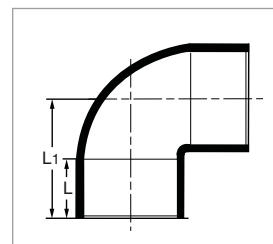
VINIDEX CODE	NOMINAL SIZE (mm)	L (mm)	L' (mm)	PACK QTY	W (kg)
60320	90	30	59.3	72	0.10
60330	150	60	97.5	10	0.49
60340	225	110	200	5	2.35
*60299	300	-	-	1	7.90



\*Parallel Socket  
Vinidex Large Bore Diameter Solvent Cement and Priming Fluid must be used.

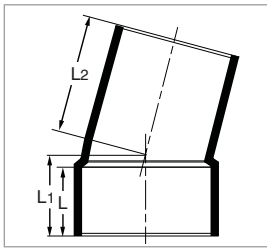
### 90° STORMWATER ELBOWS F & F

VINIDEX CODE	NOMINAL SIZE (mm)	L (mm)	L' (mm)	PACK QTY	W (kg)
60360	90	30	76.5	55	0.13
60370	150	60	143.7	9	0.68
60380	225	110	295	3	3.03
*60300	300	60	-	1	5.92



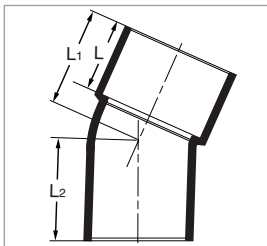
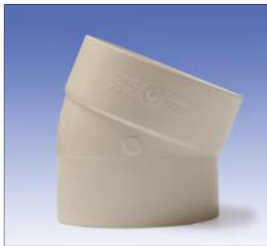
\*Parallel Socket  
Vinidex Large Bore Diameter Solvent Cement and Priming Fluid must be used.

## Pipe & Fittings



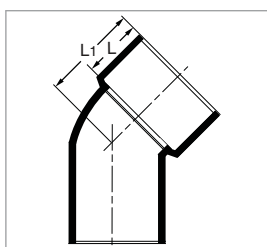
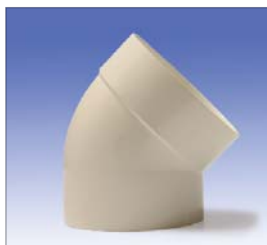
### 15° STORMWATER ELBOWS M & F

VINIDEX CODE	NOMINAL SIZE (mm)	L (mm)	L <sup>1</sup> (mm)	L <sup>2</sup> (mm)	PACK QTY	W (kg)
60390	90	28	41.7	42.7	20	0.07



### 22.5° STORMWATER ELBOWS M & F

VINIDEX CODE	NOMINAL SIZE (mm)	L (mm)	L <sup>1</sup> (mm)	L <sup>2</sup> (mm)	PACK QTY	W (kg)
60420	90	28	42.6	43	20	0.08

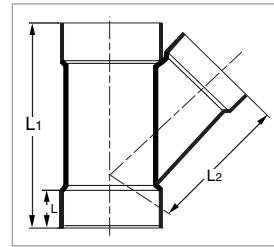


### 45° STORMWATER ELBOWS M & F

VINIDEX CODE	NOMINAL SIZE (mm)	L (mm)	L <sup>1</sup> (mm)	PACK QTY	W (kg)
60010	90	28	53	1	0.09

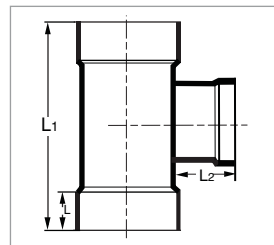
### 45° STORMWATER JUNCTIONS F & F

VINIDEX CODE	NOMINAL SIZE (mm)	L (mm)	L <sup>1</sup> (mm)	L <sup>2</sup> (mm)	PACK QTY	W (kg)
60050	90	28	193	141.4	30	0.25
60065	150	68	357	258	4	1.12
60060	150 x 100	68	357	227.5	5	1.06
60565	225	-	-	-	1	5.20
60548	225 x 100	115	480	286	1	3.15
60552	225 x 150	115	480	355	1	3.25
60301	300	-	-	-	1	10.76



### 90° STORMWATER JUNCTIONS F & F

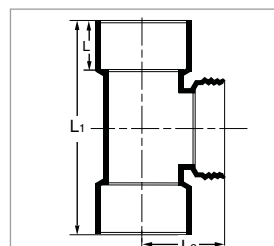
VINIDEX CODE	NOMINAL SIZE (mm)	L (mm)	L <sup>1</sup> (mm)	L <sup>2</sup> (mm)	PACK QTY	W (kg)
*60296	225	-	-	-	1	4.78
*60302	300	33	159	34	1	7.66

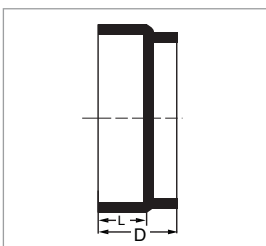
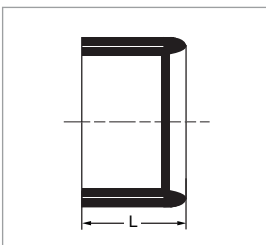
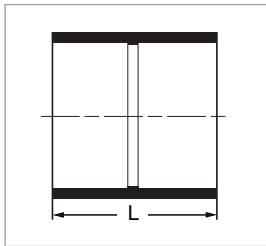


\*Parallel Socket  
Vinidex Large Bore Diameter Solvent Cement and Priming Fluid must be used.

### STORMWATER ACCESS TEES F & F

VINIDEX CODE	NOMINAL SIZE (mm)	L (mm)	L <sup>1</sup> (mm)	L <sup>2</sup> (mm)	PACK QTY	W (kg)
60100	90	28	160	80	30	0.17
60110	150	60	-	-	6	0.82





### STORMWATER COUPLINGS F & F

VINIDEX CODE	NOMINAL SIZE (mm)	L (mm)	TYPE	PACK QTY	W (kg)
60150	90	30	Access	20	0.07
60160	90	100	Slip	70	0.08
*60190	90 x 80 x 65 x 50 x 40	110.5	Reducing	10	0.10
*60153	150	130		1	0.35
*60155	225	203		1	1.36

\*Parallel Socket  
Vinidex Large Bore Diameter Solvent Cement and Priming Fluid must be used.

### STORMWATER SOCKET REDUCERS M & F

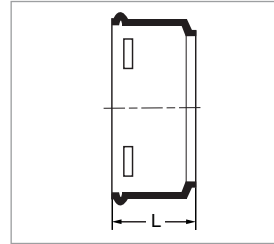
VINIDEX CODE	NOMINAL SIZE (mm)	L (mm)	PACK QTY	W (kg)
60200	100 x 90	50.5	10	0.11
60210	150 x 100	40	1	0.33
60303	225 x 150	-	1	-
60304	300 x 150	-	1	-
60305	300 x 225	-	1	-

### STORMWATER PUSH ON CAPS

VINIDEX CODE	NOMINAL SIZE (mm)	L (mm)	D (mm)	PACK QTY	W (kg)
60245	90	30	-	20	0.04
60248	150	38	74.5	5	0.28
47990	225	125	150	1	0.10

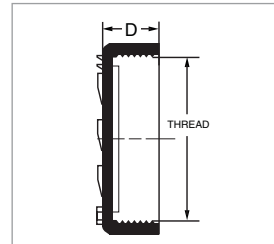
### STORMWATER PUSH ON CAPS / PLUGS

VINIDEX CODE	NOMINAL SIZE (mm)	L (mm)	PACK QTY	W (kg)
60240	90	13.5	20	0.06



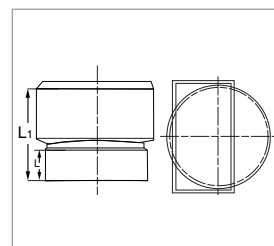
### STORMWATER THREADED ACCESS CAPS

VINIDEX CODE	NOMINAL SIZE (mm)	D (mm)	THREAD (mm)	PACK QTY	W (kg)
60250	90	18	101	10	0.05



### STORMWATER DOWNPIPE ADAPTORS F & F

VINIDEX CODE	NOMINAL SIZE (mm)	L (mm)	L' (mm)	PACK QTY	W (kg)
60280	100 x 50 x 90	28	80	20	0.5
60290	100 x 80 x 90	30	84	10	0.5
60830	100 x 100 x 100	-	-	1	0.8



#### Limitation of Liability

This product catalogue has been compiled by Vinidex Pty Limited ("the Company") to promote better understanding of the technical aspects of the Company's products to assist users in obtaining from them the best possible performance. The product catalogue is supplied subject to acknowledgement of the following conditions: 1 The product catalogue is protected by copyright and may not be copied or reproduced in any form or by any means in whole or in part without prior consent in writing by the Company. 2 Product specifications, usage data and advisory information may change from time to time with advances in research and field experience. The Company reserves the right to make such changes at any time without further notice.

3 Correct usage of the Company's products involves engineering and technical judgements, which can not be properly made without full knowledge of all the conditions pertaining to each specific installation. The Company expressly disclaims all and any liability to any person whether supplied with this publication or not in respect of anything and all of the consequences of anything done or omitted to be done by any such person in reliance whether whole or part of the contents of this publication. 4 No offer to trade, nor any conditions of trading, are expressed or implied by the issue of content of this product catalogue. Nothing herein shall override the Company's Condition of Sale, which may be obtained from the Registered Office or any Sales Office of the Company. 5 This product catalogue is and shall remain the property of the Company, and shall be surrendered on demand to the Company. 6 Information supplied in this product catalogue does not override a job specification, where such conflict arises; consult the authority supervising the job. © Copyright Vinidex Pty Limited.

#### Disclaimer

Advisory information concerning usage of Vinidex products is published to assist users to obtain best performance, and represents the best information available at the time of publishing. No warranty is expressed or implied, nor will any liability be accepted by Vinidex for any consequences resulting directly or indirectly from the use of such information. Product data and advisory information are subject to change at any time without notice.

**VIN298 20110926**