

Quick Installation Guide

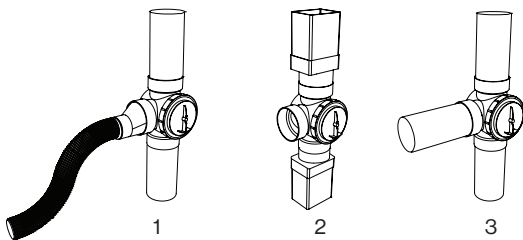
Diverter Hose and Fittings

Important: Greywater use legislation varies considerably. Before use, please ensure installation complies with all state and local government guidelines.

Using Diverter Hose Fittings

The 90mm Rainwater Diverter is very versatile and can be adapted for use in a wide variety of applications, some of which are depicted below.

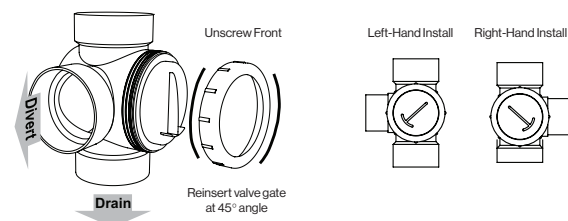
1. Use with 50mm diverter hose
2. Adapting to rectangular downpipe
3. Diverting to 90mm stormwater pipe



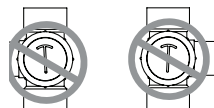
Note: the 90mm Rainwater Diverter is not a valve. Some leakage between outlets will occur.

Left-Hand and Right-Hand Installation

The 90mm Rainwater Diverter can be used for both left-hand and right-hand installation. The "T" arrow on the handle should always rotate between the side and bottom outlets. If this is not the case then unscrew the front cover, remove the handle and reinsert it in the correct orientation.



If the handle is installed upside down, i.e. with the "T" arrow pointing upwards, then the inlet will be blocked and the diverter will not function.



Safety Considerations

Do

- ✓ Only use wastewater from baths, showers, and washing machines.
- ✓ Use garden friendly washing detergents or just use the rinse water from washing machines.
- ✓ Only use greywater on the garden and rotate which areas you water.
- ✓ Only apply enough water that the soil can absorb.
- ✓ Stop using greywater during wet periods.
- ✓ Stop using greywater if odours are generated and plants do not appear to be healthy.

Don't

- ✗ Water vegetable gardens if the crop is to be eaten raw or uncooked.
- ✗ Use greywater that has faecal contamination, for example from laundered nappies.
- ✗ Use kitchen wastewater (including dishwashers). It can be more dangerous than sewage.
- ✗ Store greywater for more than 24 hours.
- ✗ Let children or pets drink or play with greywater.
- ✗ Allow greywater to flow from your property or enter stormwater systems.

Tips for Harvesting Rainwater

- Do not place hose in the water, this could cause back pressure and reduced flow.
- During extended rain fall, keep an eye on the water level of the pool. Ensure that you redirect the hose to the garden once the pool is full.
- Don't waste a drop! Connect diverter hoses from all downpipes around the home to water nearby gardens.

Limitation of Liability

This product catalogue has been compiled by Vinidex Pty Limited ("the Company") to promote better understanding of the technical aspects of the Company's products to assist users in obtaining from them the best possible performance.

The product catalogue is supplied subject to acknowledgement of the following conditions:

1 The product catalogue is protected by copyright and may not be copied or reproduced in any form or by any means in whole or in part without prior consent in writing by the Company. 2 Product specifications, usage data and advisory information may change from time to time with advances in research and field experience. The Company reserves the right to make such changes at any time without further notice. 3 Correct usage of the Company's products involves engineering judgements, which can not be properly made without full knowledge of all the conditions pertaining to each specific installation. The Company expressly disclaims all and any liability to any person whether supplied with this publication or not in respect of anything and all of the consequences of anything done or omitted to be done by any such person in reliance whether whole or part of the contents of this publication. 4 No offer to trade, nor any conditions of trading, are expressed or implied by the issue of content of this product catalogue. Nothing herein shall override the Company's Condition of Sale, which may be obtained from the Registered Office or any Sales Office of the Company. 5 This product catalogue is and shall remain the property of the Company, and shall be surrendered on demand to the Company. 6 Information supplied in this product catalogue does not override a job specification, where such conflict arises; consult the authority supervising the job. © Copyright Vinidex Pty Limited.