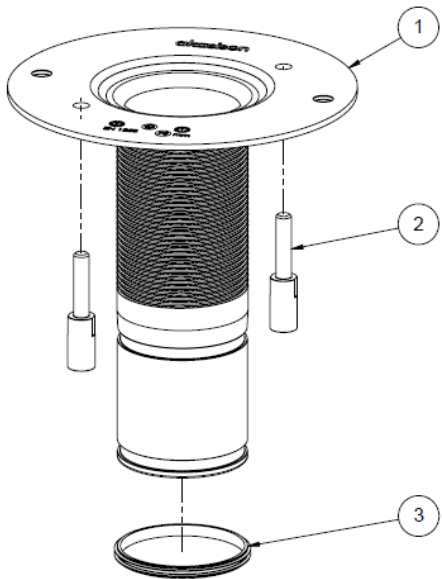


Instruction Emergency overflow gutter

This document is made to bridge the gap until the final version is ready. The official installation instructions are currently being prepared. If the gutter is ready and the overflow pieces have not yet arrived, I recommend temporarily mounting the air baffle of the gutter funnel.

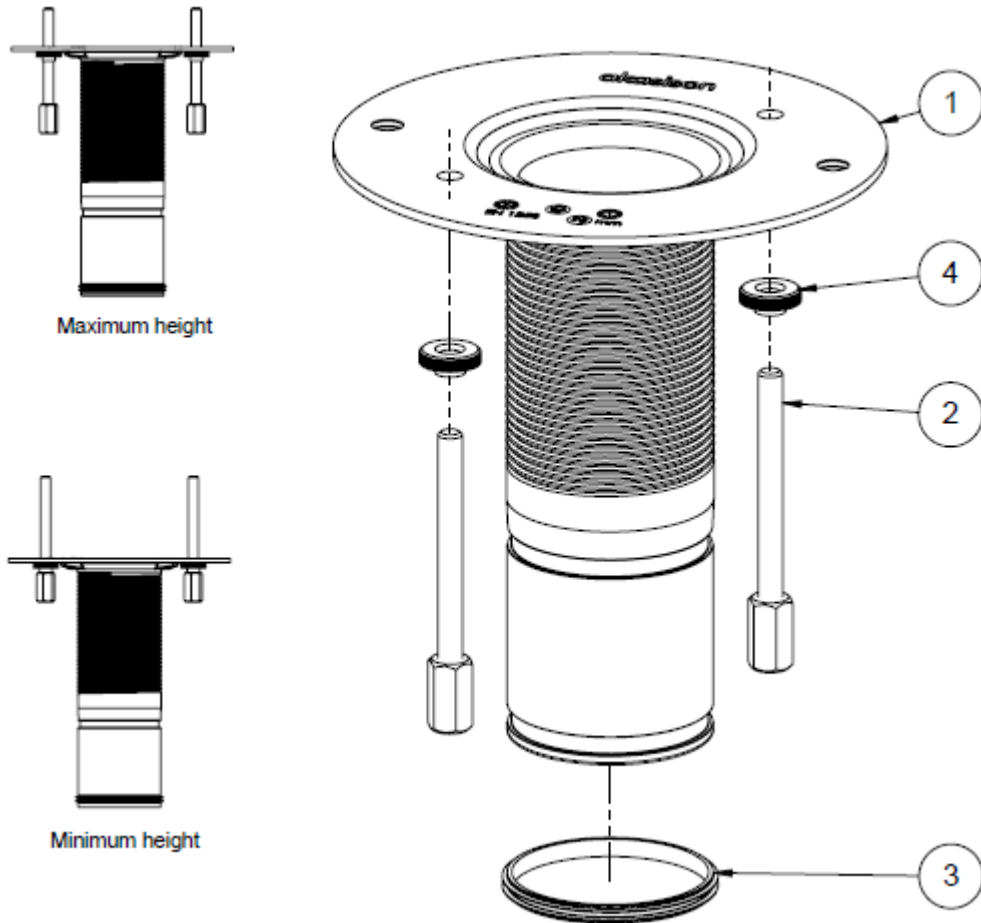


After the gutter outlet is installed the emergency overflow can easily be installed.

There are 2 variants. Which variant you need depends on the desired height of the emergency overflow :

- 747591 50mm elevation
- 747592 55-85mm elevation.

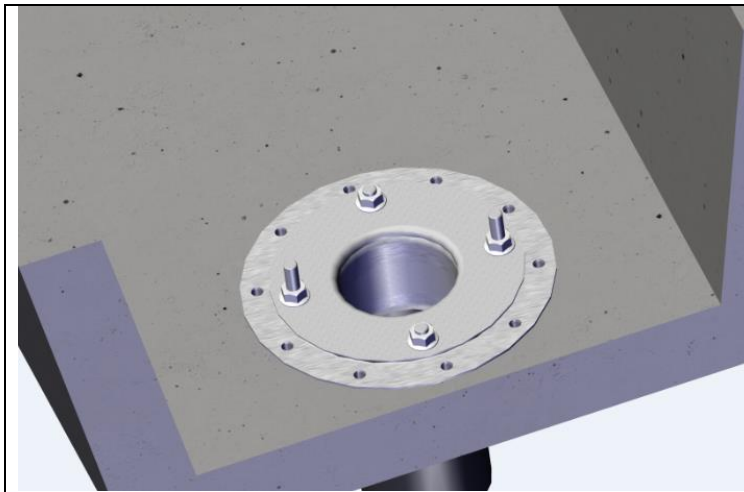
Variant 1. 747591 emergency overflow element for 75mm gutter with 50mm elevation



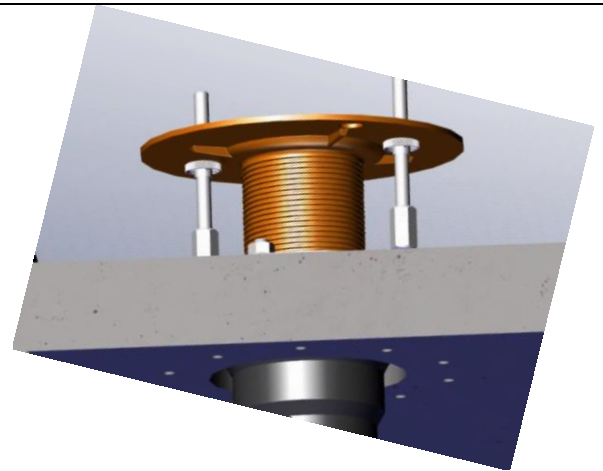
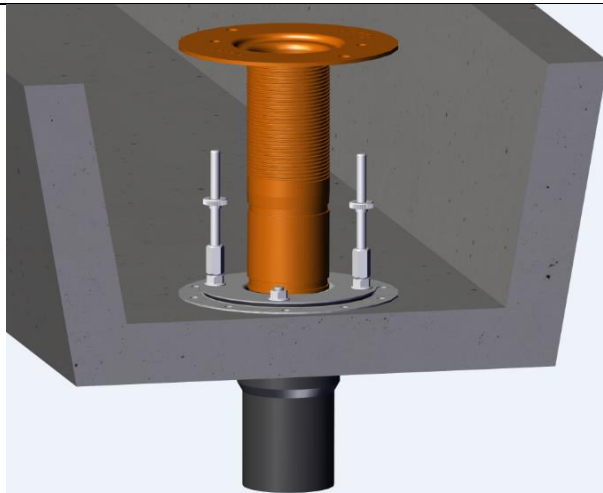
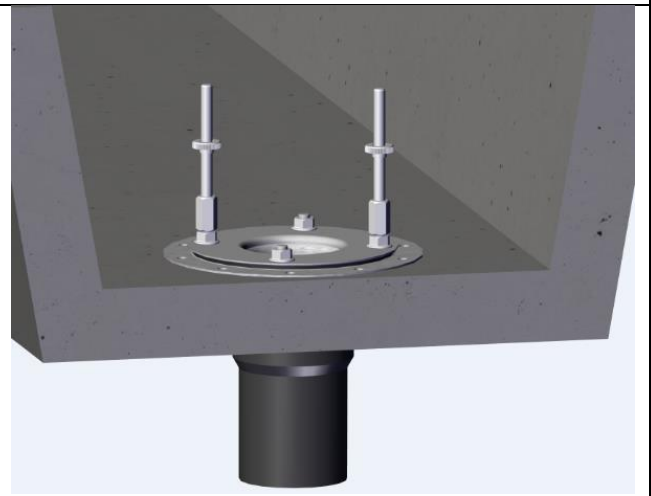
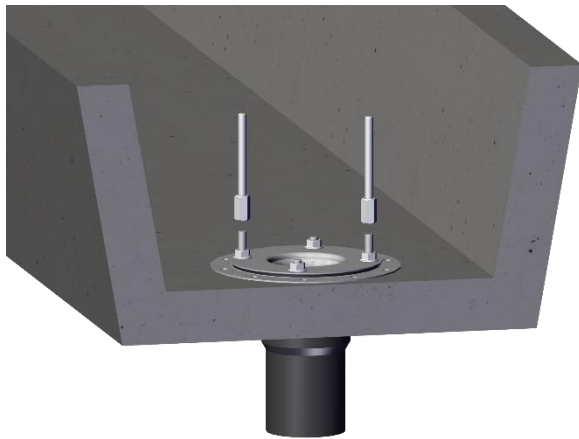
Variant 2 747592 emergency overflow element for 75mm gutter with 50mm elevation

Note: A 747592 can be converted to 747591 by removing the knurled nut. However, this takes a lot of time, which is why we carry out this operation in the factory.

Instruction Emergency overflow gutter



After the gutter outlet has been installed, a emergency overflow can easily be installed.



Instruction Emergency overflow gutter

